

Marble Run

STEM Activity

twinkl

Your Task

You will have a limited time to prepare a marble run for your marble. You can use any of the supplied materials, as well as anything around that you may be able to find.

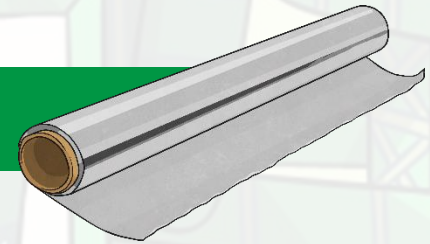


Your track must have **at least** three turns (one must be a 90 degree turn), one tunnel and one loop.

Your marble must be able to travel from the start to the finish without you needing to push it along and without coming off the track.

You Will Need

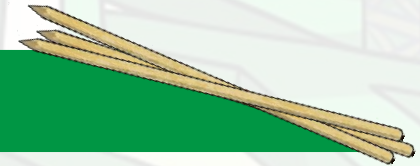
- Aluminium foil



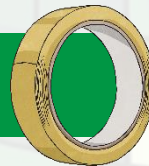
- Marbles



- Skewers



- Tape



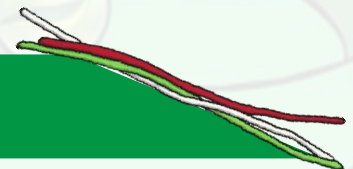
- Cardboard tubes



- Popsicle sticks



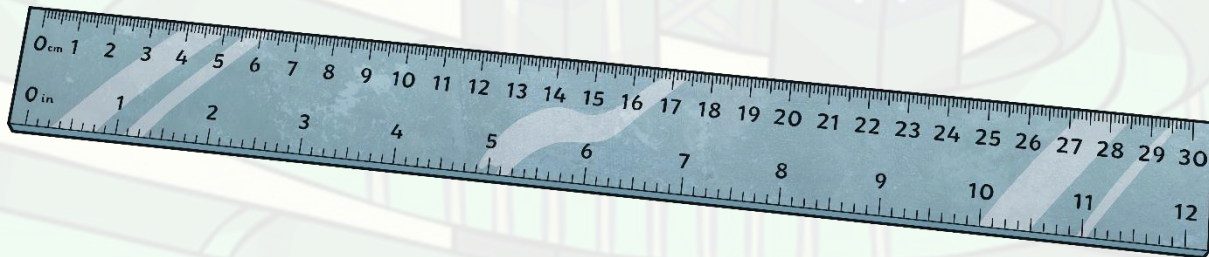
- Pipe cleaners



Go Further

Measure the length of your track from start to finish. How long is it?

Include a drop or fall in the track.



Reflection

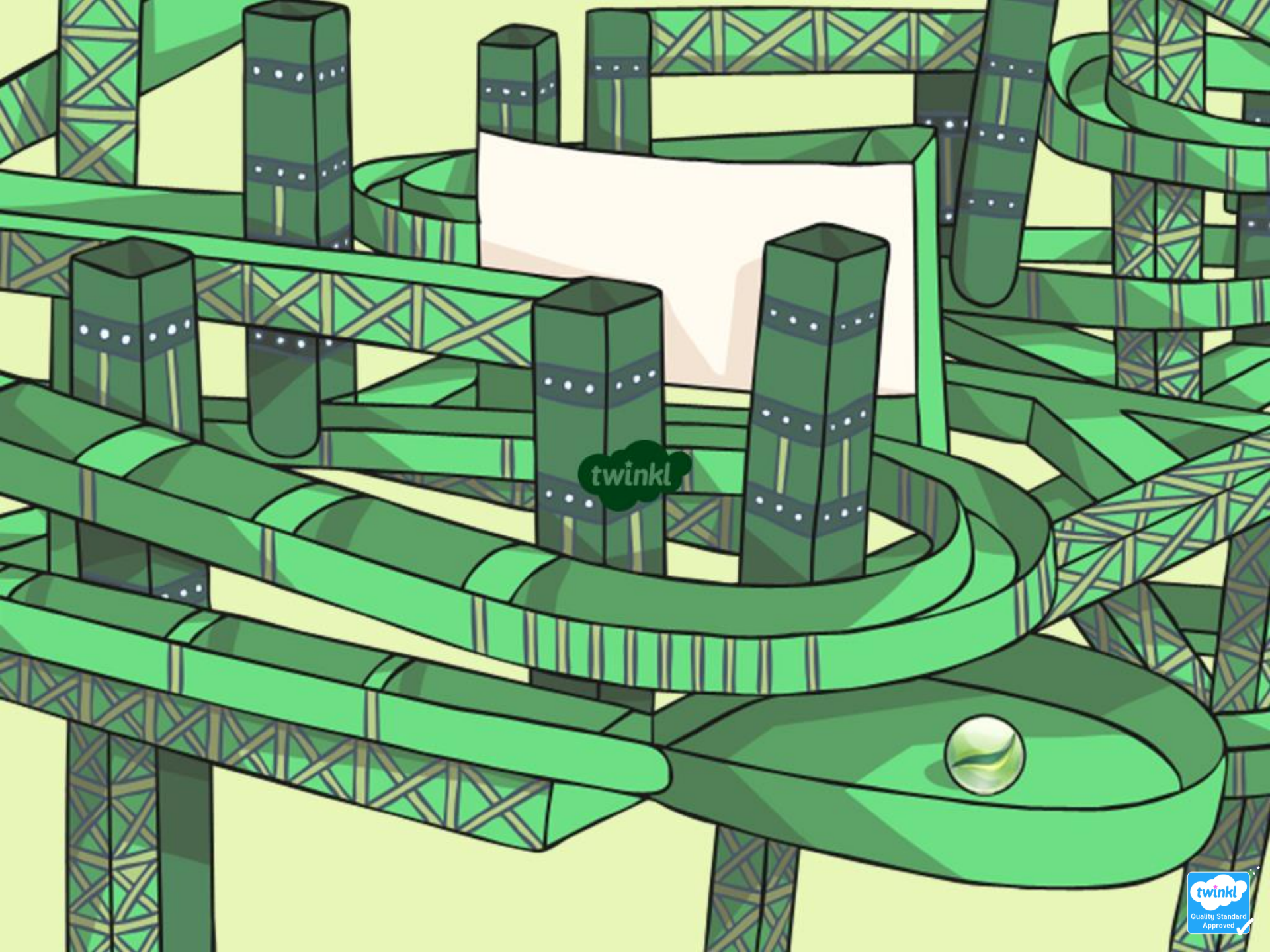
What was important about the track path?

How did you make sure the marble didn't fall off?

How did you measure your angles?

What angles did you use?

What would you do differently next time?



twinkl